

Vegetable Washer Vegetable Washer with Tank 10/40kg

ITEM # _____
MODEL # _____
NAME # _____
SIS # _____
AIA # _____



660033 (LV300)

Vegetable Washer with Tank
Kg 10-40 - 300 liter well

Short Form Specification

Item No. _____

Made from 304 AISI stainless steel. Work area in non-toxic material.

Double inclined well bottom to allow automatic cleaning. Perforated stainless steel base filter easily removable; overflow and filter in 304 AISI stainless steel. Height-adjustable feet.

Washing system by water vortex; automatic water filling.

Well capacity: 300 lt. Load per cycle: 10 kg (light vegetables); 40 kg (heavy vegetables). Cycle duration: 2-3 min.

Main Features

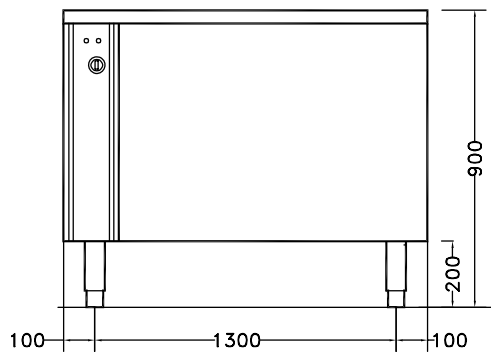
- Work area in non-toxic material compatible with the use of food.
- Double inclined well bottom to allow automatic cleaning of the unit.
- Washing well shaped to achieve an efficient water vortex.
- "Soft-action" manual ball valve regulates the wash water loading and pressure.
- Water inlet to unit via a solenoid valve.
- Simple control panel with a well drainage switch and knob to regulate recirculating water intensity.
- Cycle duration of 2 to 3 minutes.
- Mounted on adjustable stainless steel legs.
- IP25 protection against water jets, solid objects and small animals (larger than 6 mm).

Construction

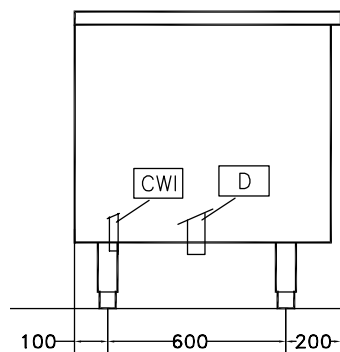
- 304 AISI stainless steel construction throughout.
- Wells to have a capacity of 10 kg of light vegetables or 40 kg of heavy vegetables per cycle.

APPROVAL: _____

Front

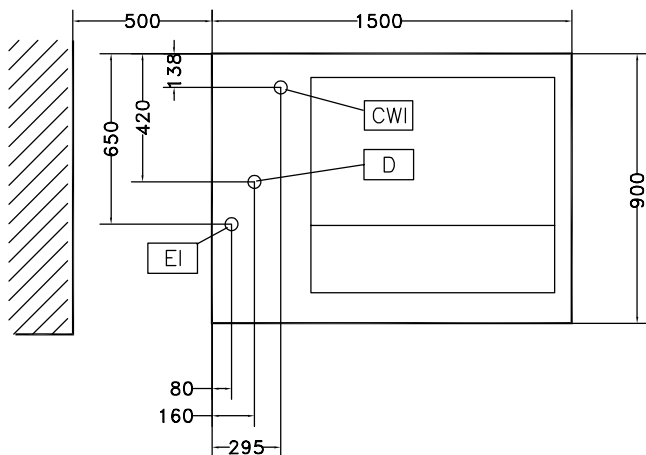


Side



CWI = Cold Water inlet 1 (cleaning)
 D = Drain
 EI = Electrical inlet (power)

Top



Electric

Total Watts: 1.1 kW

Key Information:

| | |
|------------------------------------|---------|
| External dimensions, Width: | 1500 mm |
| External dimensions, Depth: | 900 mm |
| External dimensions, Height: | 850 mm |
| Shipping weight: | 196 kg |
| Usable well capacity: | 300 lt |
| Load per cycle - light vegetables: | 10 kg |
| Load per cycle - heavy vegetables: | 40 kg |